

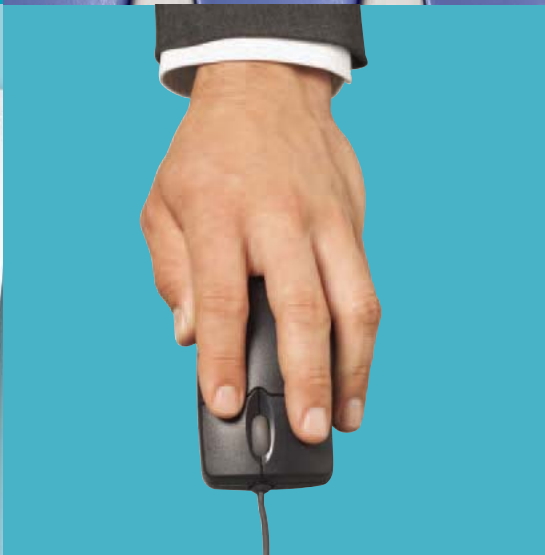
Ricoh Aficio MP 2510/MP 3010 Series
B/W Multifunctional Systems
The Power to Perform

RICOH

value

dependable

secure



Ricoh Aficio MP 2510/MP 3010 Series

**High-performance Digital Office Systems that
Combine Power and Functionality**

Achieving greater productivity in your office, with fewer resources and tighter deadlines, means finding the right digital multifunctional system. Designed to address these rigorous requirements, the RICOH® Aficio® MP 2510/MP 3010 Series offers busy workgroups the power to perform. From image capture through file management and professional output, the Ricoh Aficio MP 2510/MP 3010 Series delivers efficient, secure and cost-effective workflow that is integral to your business success.



FastFlexibleUnmatchedIntuitive

Fast, Reliable Network Printer

Speed your important documents to completion with the Ricoh Aficio MP 2510/MP 3010 Series' 466 MHz processor and 384 MB memory. And up to 600-dpi resolution ensures superb output quality—quality that shows.

- The high-speed 10/100BaseTX Ethernet and USB 2.0 interface allow seamless network connectivity.
- For powerful print performance, Ricoh offers the innovative, icon-based RPCS (Refined Printing Command Stream), PCL5e/6 and optional Adobe® PostScript® 3™ drivers, as well as a full complement of connectivity utilities, for compatibility with today's most popular computing and printing platforms, including Windows, Macintosh, AS/400, Linux and UNIX.
- Secure data in shared printing environments with Hold/Stored/Locked Print, rendering expensive, space-consuming mail bins obsolete.
- PDF Direct Print reduces network traffic by sending PDF files directly to the printer without opening the Adobe Acrobat software. The perfect solution for printing scanned PDFs.

Flexible Network Scanner

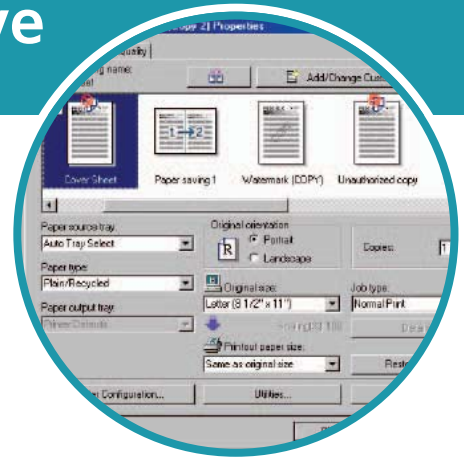
Ideal for streamlining electronic workflow, the TWAIN-compliant Ricoh Aficio MP 2510/MP 3010 Series harnesses the power of your network for measurable gains in productivity and cost savings.

- Send electronic documents anywhere in the world with Scan-to-Email. Access up to five LDAP Servers, making efficient use of existing information and saving programming time.
- Reduce network congestion using Scan-to-URL. Stored documents are available for remote Web retrieval, 24/7 access to price lists, presentations and more.
- Scan-to-Folder is a convenient way to archive and share larger files up to 2 GB with colleagues and clients, even those in mixed O/S environments.
- An array of industry standard file formats (TIFF, PDF and JPEG) provide for seamless communication.

Unmatched Fax Functionality

Enjoy greater workflow efficiency and bottom-line results by delivering electronic or paper-based documents via...

- Internet Fax/IP Fax—Quickly deliver fax messages over the LAN/WAN as hardcopy or e-mail, circumventing the PSTN (Public Switched Telephone Network) and the associated phone charges.
- For added convenience, LAN-Fax enables PC-based faxing so you can send electronic documents to a remote fax machine, without leaving your desk.
- For better fax management, Fax Forwarding directs inbound faxes directly to e-mail, a folder or the hard drive.
- A powerful fax system with unmatched versatility and throughput capacity, the Ricoh Aficio MP 2510/MP 3010 Series offers a high-speed 33.6 Kbps modem with JBIG compression and up to three G3 lines.



RPCS is an easy-to-use, icon-based print driver that enables you to apply and save special settings, for one-click job processing.



Scan-to-URL improves information sharing and reduces network traffic.



The Ricoh Aficio MP 2510/MP 3010 Series' Document Server is a secure, virtual filing cabinet that stores up to 3,000 documents. Frequently used documents can be reprinted, refaxed and rescanned.

FaxPrintScanNetworkE-mail

Intuitive Tools to Maximize Efficiency

The Ricoh suite of easy-to-use software utilities simplify system management, monitoring and troubleshooting—everything needed to ensure smooth daily operation.

- Web Image Monitor enables Web access to system settings, address book and much more.
- To efficiently manage multiple, connected Ricoh devices, Web SmartDeviceMonitor allows centralized configuration, monitoring and management.
- Regardless of location, On-demand Status E-mail Notification enables IT to query the device for important system reports.
- To maximize uptime, Auto E-mail Notification sends a report to a designated e-mail address when the machine is not operating at optimum performance levels. For instance, when the toner is low.

Advanced Network and Data Security

To help safeguard your network and the documents it carries, the Ricoh Aficio MP 2510/MP 3010 Series supports advanced security solutions.

- Using your existing network login infrastructure, Windows/LDAP Authentication ensures that only users with a valid user name and password can access system functions.
- Deter copying of sensitive documents by using Unauthorized Copy Control, a welcome feature in any office responsible for creating and distributing confidential information.
- DataOverwriteSecurity System automatically overwrites the “latent image” left on the internal hard drive after a job is completed, making any effort to access and reconstruct the residual image data virtually impossible.

Unparalleled Document Storage and Retrieval



The Ricoh DocumentMall™ is powerful document management software that is delivered as an on-demand service over the Internet. Seamless integration with the Ricoh Aficio MP 2510/MP 3010 Series allows you to upload scanned documents directly to DocumentMall™ and store critical documents in one secure location; manage documents online from the convenience of a PC; share documents with anyone at anytime; and protect documents with state-of-the-art security and facilities. DocumentMall™ addresses a wide range of document management needs—from simple document archiving and disaster readiness, to global sharing and collaboration.

Open Architecture



The Ricoh Embedded Software Architecture—an innovative Java (J2ME)-compatible software development platform—allows for the development of key applications that run on the Ricoh Aficio MP 2510/MP 3010 Series, dramatically enhancing your organization’s workflow. The Ricoh Aficio MP 2510/MP 3010 Series can easily be customized to meet your needs by controlling features such as the operation panel, printing, saving files and scanning.



Your Environmental Partner

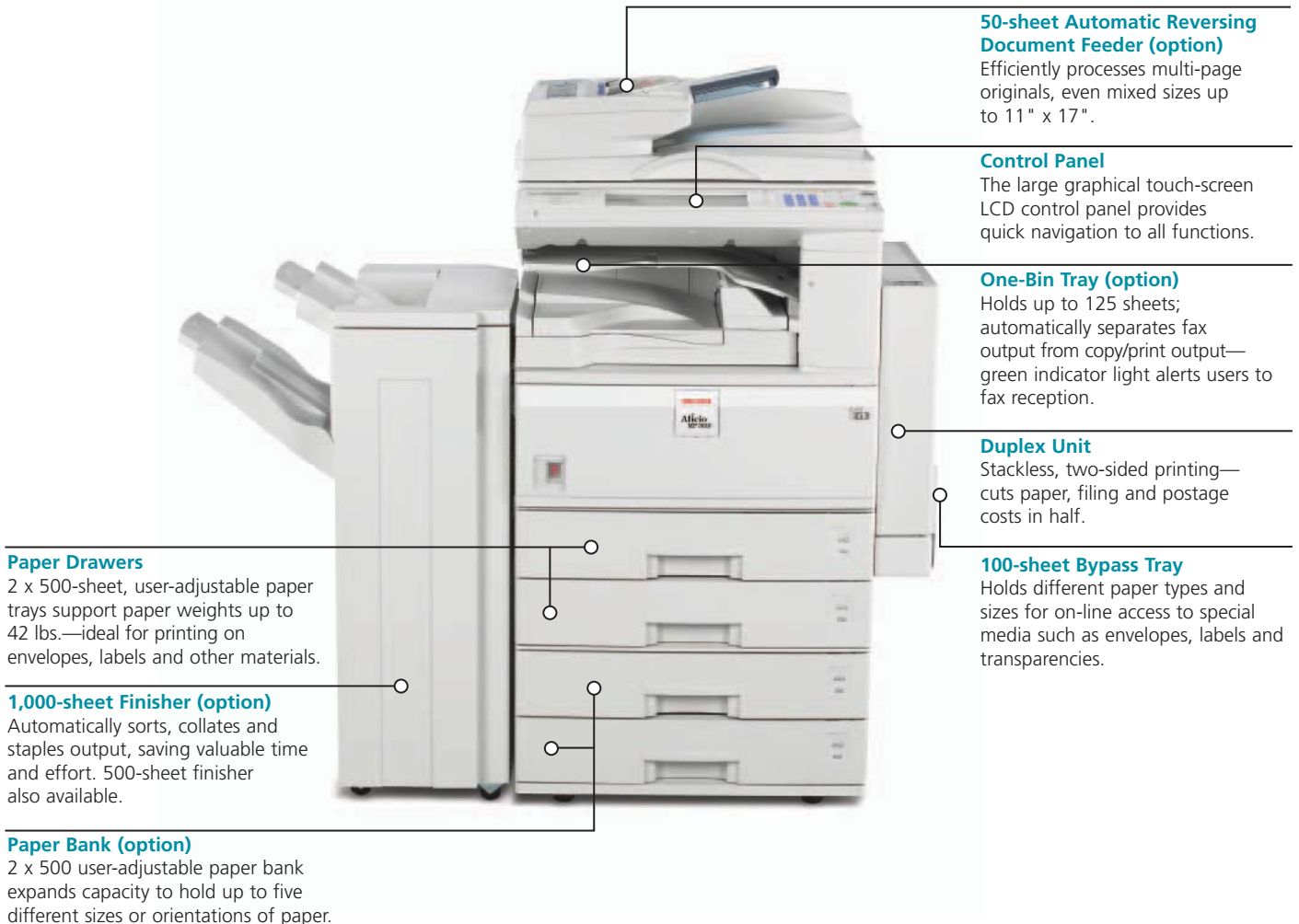


Ricoh continues its long-standing commitment to developing office solutions with environmentally-friendly and superior energy- and supply-saving features, without compromising productivity, including:

- Quick Start-Up (QSU) Technology
- Power-saving Sleep Mode
- Duplex and Combine Copy Modes
- Internal Toner Recycling Mechanism
- Low Noise Levels
- Minimal Ozone Emissions
- RoHS (Restriction of Hazardous Substances) Compliant

A Digital Copier, and Much More

Get more done in your busy day with the Ricoh Aficio MP 2510/MP 3010 Series. Standard digital copying offers 25- and 30-cpm speeds with the added benefit of a fast 4.4-second first-copy-out time. These innovative MFPs transform the way you do business.



Select the Configuration to meet the requirements for your office



For an affordable printing solution with a flexible upgrade path for scanning and faxing



For productive printing and document handling



For total document needs in a space-saving design



For secure document storage, management and distribution via the Internet

Ricoh Aficio MP 2510/MP 3010 Series

System Specifications

Aficio[®]

Engine/Copier Specifications

Configuration	Console
Scanning Element	Flatbed with Moving CCD Array Image Sensor
Printing Process	Single Laser Beam Scanning & Electrophotographic printing
Document Feeding	Optional 50-sheet ARDF
Toner	Dry, Dual Component
System Memory (std./max.)	128/384 MB RAM
Hard Disk Drive	40 GB option
Copy Resolution	600 x 600 dpi
Grayscale	256 levels
Exposure Adjustment	Manual & Automatic
Quantity Indicator	Up to 999
Original Type	Book/Sheet
Maximum Original Size	Up to 11" x 17"
Copy Size	5.5" x 8.5" to 11" x 17"
Copy Type	Plain Paper, Transparencies, Envelopes
Warm-up Time	12 seconds
First Copy Speed	4.4 seconds
Continuous Copying	MP 2510: 25 copies/minute (LTR)
Speed	MP 3010: 30 copies/minute (LTR)
Recovery Time	10 seconds (from Auto Off)
Power Source	120V/60Hz/12A
Dimensions	26" (W) x 28" (H) x 23" (D)
Weight	156 lbs.
Standard Paper Capacity	500 sheets x 2 trays and 100-sheet Bypass Tray
Optional Paper Capacity	500 sheets x 2 trays or 2,000-sheet Large Capacity Tray (LCT)
Paper Size	5.5" x 8.5" to 11" x 17"/ A6 to A3
Paper Weight	16 to 28 lb. Bond/ 60 to 105g/m ² (Tray 1) 14 to 42 lb. Bond/ 52 to 157g/m ² (Tray 2 and Bypass) 17 to 28 lb. Bond/ 64 to 105g/m ² (Duplex)
Standard Output Tray Capacity	500 sheets (8.5" x 11")
Reduction Ratios	25%, 50%, 65%, 73%, 78%, 85%, 93%
Enlargement Ratios	121%, 129%, 155%, 200%, 400%
Zoom	25% to 400% in 1% increments
Standard Features	Auto Magnification, Auto Paper Select, Auto Tray Switch, Center/Border Erase, Combine Mode, Cover Insertion, Date Stamp, Directional Magnification, 100% Duplex Productivity, Electronic/Rotate Sorting, English Pre-set Stamps, 10 Job Programs, Negative/ Positive, OHP Slip Sheet, Page Number Stamp, Paper Designate, Series Copy, Touch- Screen Control Panel, 100 User Codes (optional 500 max.)
Optional Features with HDD	Background Numbering, Booklet/Magazine Copy, Document Server (3,000 file capacity), Reserve Copy and User Stamps
Printer Specifications (Option)	
Print Speed	MP 2510: 25 ppm MP 3010: 30 ppm
CPU	RM7035C 466 MHz

Standard Interfaces

10/100BaseTX Ethernet
USB 2.0

Optional Interfaces

IEEE 802.11b Wireless LAN
Bluetooth
IEEE 1284

Memory Capacity

384 MB RAM shared
TCP/IP, IPX/SPX, AppleTalk
Windows 9x/NT4.0/2000/
ME/XP/Server 2003, Netware,
UNIX; Sun Solaris, HP-UX, SCO
OpenServer, Red Hat Linux,
IBM AIX, Mac 8.6 - 9.2x,
10.1+, SAP R/3, NDPS Gateway,
IBM iSeries/AS/400® using
OS/400 Host Print Transform

Network Operating Systems

SmartDeviceMonitor,
Web Image Monitor,
Web SmartDeviceMonitor,
DeskTopBinder V2 Lite
PCL 5e/6 emulation*

Utilities

Ricoh RPCS
Adobe PostScript 3 (optional)
Up to 600 dpi (2400 x 600 dpi
with smoothing)

Page Description Languages

Ricoh RPCS
Adobe PostScript 3 (optional)
Up to 600 dpi (2400 x 600 dpi
with smoothing)

Print Resolution

Up to 600 dpi (2400 x 600 dpi
with smoothing)

Grayscale Fonts for PCL 5e/6

256 Levels
35 Intellifonts, 10 TrueType
Fonts, 1 Bitmap, 13
International Fonts

Fonts for PS3

136 PostScript Fonts
Form Overlay, Watermarks,
Spool Printing, Sample/
Locked/Hold/Stored Print*,
Encryption

Standard Features

Scanner Specifications (Option)

Scanning Speed	Embedded Scanning: 52 ipm (@ 200 dpi)
Scanning Resolution	600 dpi
Grayscale	256 Levels
Scan Area	Up to 11" x 17"
Interface (standard)	10/100BaseTX Ethernet
Interface (optional)	IEEE 802.11b Wireless LAN
Protocol	TCP/IP, IPX, SMTP, POP 3, SMB, FTP, NCP, LDAP, SNMP
Memory Capacity	384 MB RAM shared
File Types	Single page TIFF/JPEG/PDF, Multi-page TIFF/PDF
Standard Features	Embedded Scan-to-Email/HDD/ Folder/URL and TWAIN

Fax Specifications (Option)

Circuit	PSTN, PBX
Compatibility	ITU-T G3
Resolution	200 x 200/100 dpi 400 x 400 dpi (optional)
Compression Method	MH, MR, MMR, JBIG
Scanning Speed	0.40 seconds (LEF)
Modem Speed	33.6 Kbps with Auto Fallback
Transmission Speed	G3: 3 seconds per page (MMR Compression) G3: 2 seconds per page (JBIG Compression)
Memory	4 MB standard/28 MB maximum 320 pages/2,240 pages 500/2,000
Std./Max. Auto Dials	100 (max. 500 numbers per group)
Group Dials	4 digits 3 keys
ID Code Programming	Auto Document (6), Book Transmission, Dual Access, Duplex Reception, Image Rotation, 1 Hour Backup
User Function Key	
Standard Features	

Optional Features

Simultaneous Operation of up
to 3 Lines (G3 x 3); LAN-Fax
Capability, Internet Faxing
(T.37), IP Faxing (T.38), Fax
Forwarding to E-mail/HDD/
Folder with Scan/Print Installed

PS490 Paper Bank (Option)

Paper Size	5.5" x 8.5" to 11" x 17"/ A5 to A3
Paper Weight	16 to 28 lb. Bond/ 60 to 105g/m ²
Paper Capacity	2 x 500 sheets
Dimensions	21.7" (W) x 20.5" (D) x 10.7" (H)

Large Capacity Tray PS500 (Option)

Paper Size	8.5" x 11"/A4
Paper Weight	16 to 28 lb. Bond/ 60 to 105g/m ²
Paper Capacity	2,000 sheets
Dimensions	21.7" (W) x 20.5" (D) x 10.7" (H)

One-Bin Tray PT280 (Option)

Paper Size	5.5" x 8.5" to 11" x 17"/A5 to A3
Paper Weight	16 to 28 lb. Bond/ 60 to 105g/m ²
Paper Capacity	125 sheets

SR790 Finisher (Option)

Paper Size	5.5" x 8.5" to 11" x 17"/A6 to A3
Paper Weight	16 to 42 lb. Bond/ 60 to 157g/m ²
Stack Capacity	Proof Tray: 250 sheets (8.5" x 11" or smaller), 50 sheets (8.5" x 14" or larger) Shift Tray: 1,000 sheets (8.5" x 11" or smaller) 500 sheets (8.5" x 14" or larger)
Staple Capacity	50 sheets (8.5" x 11") 30 sheets (8.5" x 14" or larger)
Staple Position	3 positions (1 staple/2 positions; 2 staples/1 position)
Dimensions	20.7" (W) x 20.5" (D) x 31.1" (H)

SR820 Finisher (Option)

Paper Size	7.25" x 10.5" to 11" x 17"/ A3 to B5
Paper Weight	16 to 34 lb. Bond/60-128g/m ²
Stack Capacity	500 sheets
Staple Capacity	30 sheets (8.5" x 11") 20 sheets (8.5" x 14" or larger)
Staple Position	1 position
Dimensions	13.8" (W) x 19.3" (D) x 9.1" (H)

Additional Options

ARDF DF83 (50-sheet), Platen Cover Type 1018, Printer/
Scanner Kit Type 3010, Adobe PostScript 3 Type 3010, Fax
Type 3030, G3 Interface Type 3030, 32 MB Fax Memory,
Handset Type 1018, Hard Disk Drive Type 3030, FAC20
Cabinet, Bridge Unit Type 1027, Internal Shift Sort Tray
Type 1027, Key Counter Bracket Type 1027, User Account
Enhancement Kit Type E, File Format Converter Type B,
Data Overwrite Security Unit Type D, Copy Data Security
Unit Type A, IEEE 1284 Interface Board Type A, Bluetooth
Interface Unit Type 3245, IEEE 802.11b Interface Unit Type
H, Network Enhancement Kit Type 3010P, VM Card Type B

*Option for MP 2510P/MP 3010P configurations.

RICOH
www.ricoh-usa.com

Ricoh Corporation, Five Dedrick Place, West Caldwell, NJ 07006
Ricoh® and the Ricoh Logo are registered trademarks of Ricoh Company, Ltd. Windows® and Windows® 95/98/Me/NT4.0/2000/XP are registered trademarks of Microsoft Corporation. Macintosh®, Mac® OS and
AppleTalk® are registered trademarks of Apple Computer, Inc. Adobe® and PostScript® are registered trademarks of Adobe Systems, Inc. PCL® is a registered trademark of Hewlett-Packard Company. RPCS™ is
a trademark of Ricoh Company, Ltd. All other trademarks are the property of their respective owners. Printed in U.S.A. on recycled paper. Print speed may be affected by network, application or PC performance.
Specifications and external appearances are subject to change without notice. Products are shown with optional features.

Printed in U.S.A. on recycled paper because Ricoh cares.

CA-0561

